

www.durlax.com

DURLAX[™]

 **aspiron**[®]
SOLID SURFACES

imagine.create[™]

www.durlax.com

DURLAX[™]

India Head Office :
Durlax[™] Archtech Pvt. Ltd.

901 A Wing, 9th Floor, Lotus Corporate Park,
Graham Firth Steel Compound,
Nr. Jaicoach Signal,
Opp. Western Express Highway,
Goregaon (East), Mumbai - 400063

Office : +91-22-61560000-100
E-mail : info@durlax.com

Toll Free No.: 1800 4193334

Copyright © 2010 Durlax[™] Archtech Pvt. Ltd.
aspiron[®] is a registered trademark

Printed in Korea

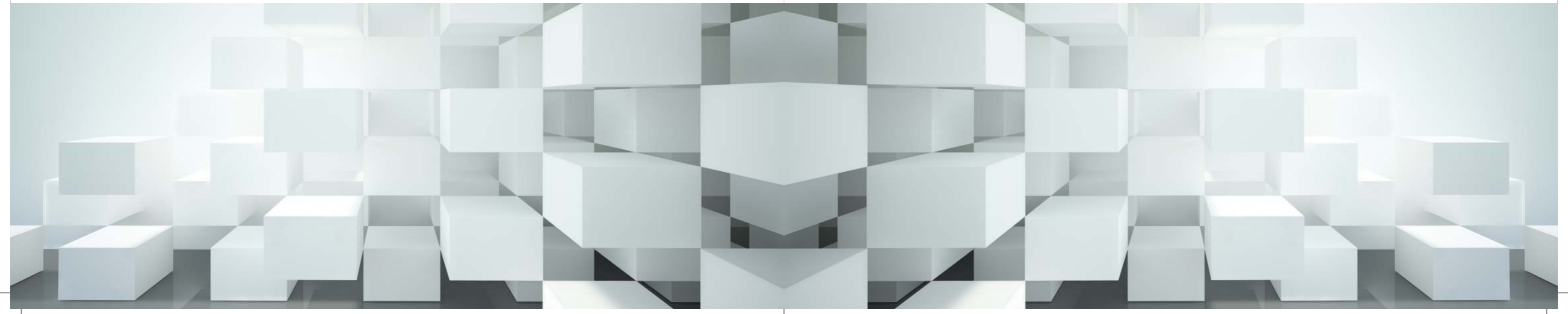
 **aspiron**[®]
SOLID SURFACES

imagine.create™

aspiron® is a solid surface offering superior design possibilities and excellent long term performance. It can be used both in home and many different commercial environments from Hotels to Healthcare, retail to marine.

With its balance of beauty and performance, aspiron® leads itself to imaginative uses, innovative designs and enduring applications.

If you can imagine it, you can probably create it with aspiron® Available in more than 60 colours in India, aspiron® can be carved, routed and worked like wood, moulded, thermoformed or inlaid. Seamlessness increases the design option to almost limitless.



Living Spaces

aspiron® offers virtually endless design possibilities, enabling you to convert your ideas into striking reality. You will choose aspiron® for its irresistible aesthetic appeal but will soon be overwhelmed by its unmatched functionality and easy maintenance.





Bathroom

Elegance and functionality at its prime.

Seamless and impervious to moisture, aspiron® is ideal for bathrooms. Moreover it's three dimensional formability enables it to use for vanities, sinks, cabinets and even window sills. Its ability to resist stains makes maintenance easy.



Vanity | Vanity Counter | Wall Cladding | Shower Tray | Shower Cubical | Bath Tub
Vanity Furniture | Door Jams & Window Sills | Mirror Frames | Washroom Partitions



Kitchen

Ready for anything your kitchen dishes out.

Think of aspiro[®] as a non-stick cookware. Spills, stains and dirt - aspiro[®] meets the demands of your kitchen with beautiful aplomb, while its spectrum of colours enables you to add your distinctive touch to your kitchen.



- | Kitchen Counter Top
- | Back Splash with Coving
- | Dado Wall
- | Sink Bowls





- | Kitchen Island Top
- | Serving Counter
- | Kitchen Shutters
- | Chopping Board
- | Dust Bin



Commercial

In a class of its own.

Highly durable, elegant and versatile, aspron® is perfectly suited for public spaces, shopping centres and other commercial applications. Being non-porous and hygienic, aspron® is recommended for use in hotels, healthcare and areas where hygiene is of utmost importance.

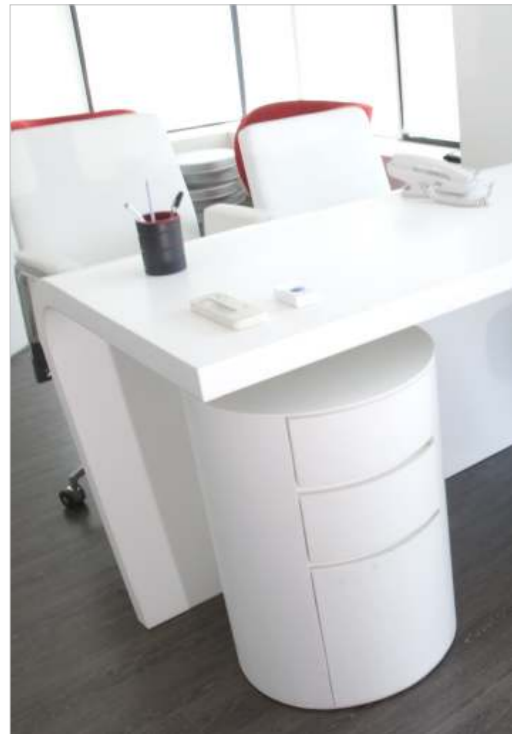




Reception Desk | Wall Partition | Featured/Designer Wall | Column Cladding
Airline Check in Counters | Display Boxes | Dust Bin | Seating's in the Lounge Area
Working Counters | Lift Lobby Cladding



Luggage Racks | Food Court Areas
Planters | Urinal Partition | Conference Table | Signage | Handrail





Retail

The amazing versatility and attributes of aspron® takes it beyond counters and reception desks. The imagination of the designer meets the malleability of aspron® to create outstanding retail interiors.



Display Units | Display Counters | Designer/Customized Wall Panels
POP Units | Light Fixtures | Cash Counters | Kiosk | Signage



Healthcare

aspiron® is also an ideal material for healthcare industry as being non-porous it doesn't harbour pathogens and thus inhibits bacterial growth. Moreover it survives impacts and spillages that usually ruin other surfaces and retains its beautiful appearance for years to come.

OT Wall Cladding | OT Ceiling | OT Door Jams | Scrub Vanities | Vanity Counters
Baby Bath | Nurses Counter | Laboratory Tops | Hygiene Surfaces
Crash Guards | Storage Racks

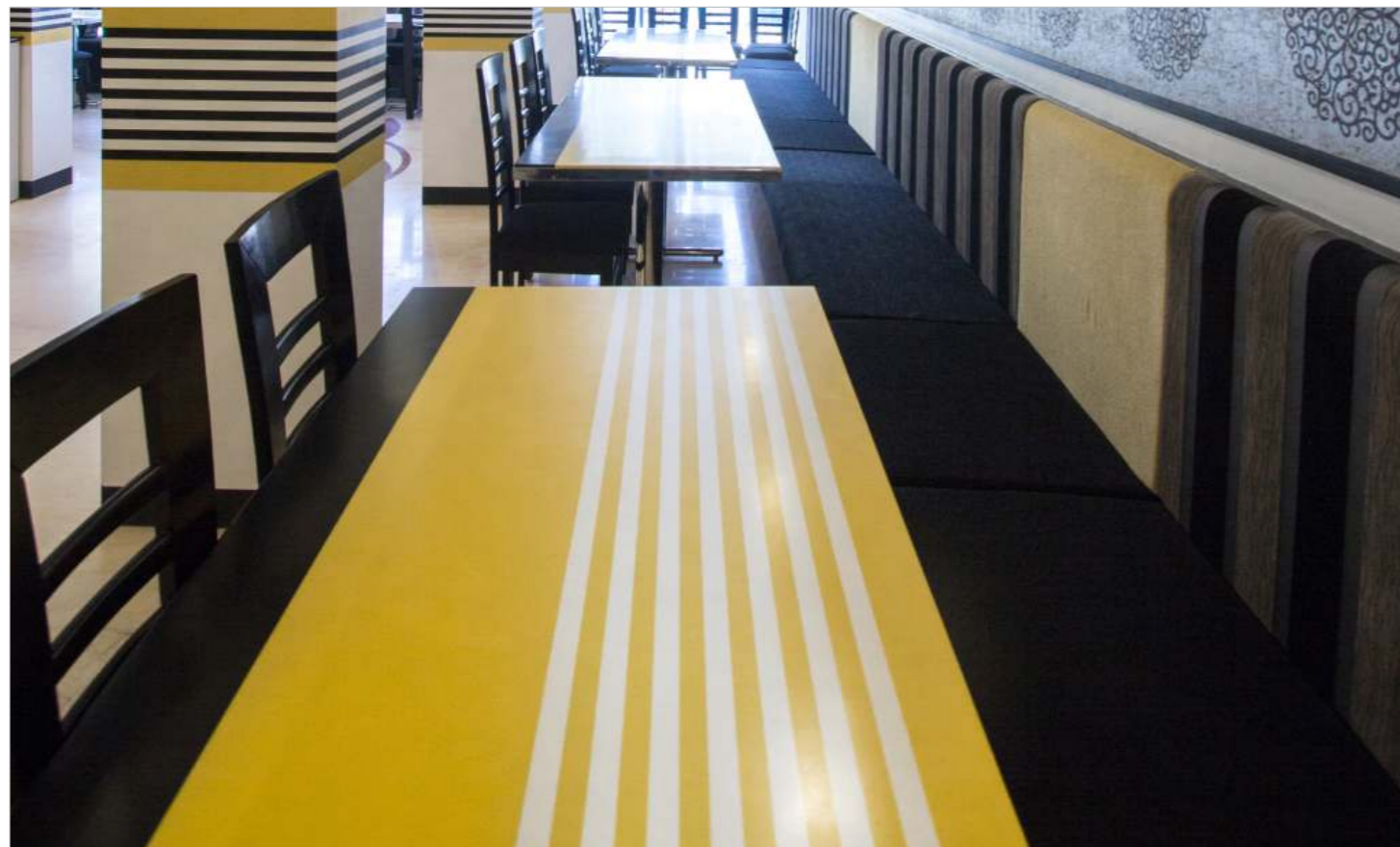


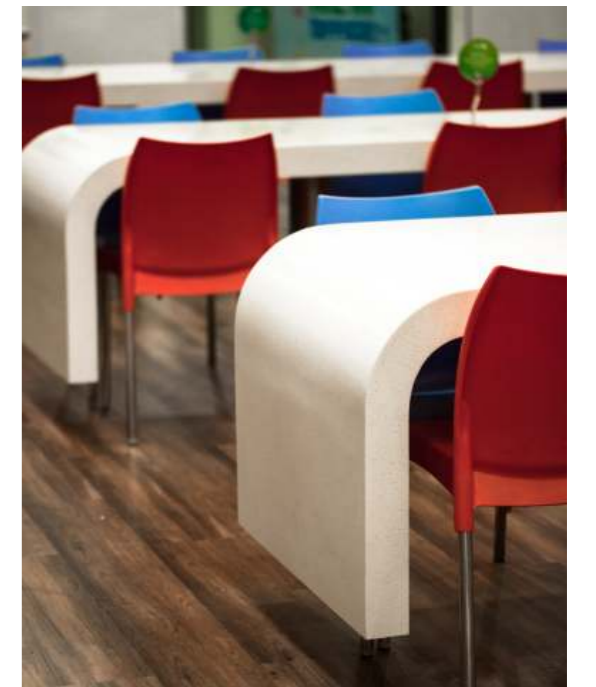
Speciality Application

OT Walls
Anti-bacterial & Hygienic

Hospitality

Hotel reception, pub, restaurants are the most demanding areas where easy maintenance is just as important as an appearance. Highly durable, aesthetically appealing and easy to care for, aspiron® passes the test with fling colours, aspiron® exudes unusual warmth and character and is sure to create pleasing and welcoming atmosphere.





Living with aspiro[®]

USE and CARE GUIDELINES

Cleaning kitchen countertops and other aspiro[®] surfaces
 aspiro[®] is a durable and repairable product that will last for many years with simple care. Follow these instructions to preserve your aspiro[®] solid surface products.

1. Everyday Care

General cleaning of your aspiro[®] solid surfaces can be done by wiping the surface with a damp cloth or sponge, then dry with soft cloth or paper towels to prevent spotting; especially in areas with hard water.

2. Basic Stains

Clean with an ammonia-based product such as household glass cleaner or commercially available non-abrasive spray-on cleaners for solid surface products. Wipe dry with a soft cloth or paper towels to prevent spotting.

3. Stubborn Stain and Minor Scratches

There are over 60 colors available in aspiro[®] and each color can be supplied with a different type of finish by a aspiro[®] certified fabricator / installer. Dark colors in countertop surfaces and particularly dark colors that have been finished to a gloss, like anything else, will potentially show signs of use, such as scratches and soap residue, more readily than light colored solid surface materials. Therefore, gloss finish generally requires additional maintenance and care to retain its original luster. Different cleaning techniques are required to remove stubborn stains and minor scratches depending on the type of finish and color as detailed in the following instructions (Note : please contact your certified fabricator/ installer if you are uncertain which type of finish is applied to your aspiro[®] solid surfaces). DO NOT attempt to repair deep scratches, chips or burns, contact a certified aspiro[®] fabricator / installer.



- **Matt Finish** is the standard finish delivered by your certified fabricator / installer. It is a low or no-sheen finish and is recommended in all high-use areas.

Scrub in a small circular motion with a wet sponge and an abrasive cleanser such as Soft Scrub[®].
 Darker colors tend to require more attention than lighter colors.

- **Satin Finish** has a slightly higher sheen than matt and requires more attention depending on frequency of use and area of application.

Lightly scrub surface in a small circular motion with a wet sponge and an abrasive cleanser such as Soft Scrub[®] over stain or scratch.

Darker Color	Darker Colors tend to require more attention than lighter colors. Scrubbing too aggressively may actually reduce the gloss level.
--------------	--------------------------------------------------------------------------------------------------------------------------------------

- **Gloss Finish** is a higher and reflective sheen that requires additional care and maintenance. It is important to note that a gloss finish, especially on a dark color, will require more care than a Matt/Satin finish. Therefore, be sure not to apply the same method or process recommended for a Matt / Satin finish when caring for a Gloss finish. Repeat the procedure shown below - If stain persists, contact your certified fabricator/installer for assistance.
 DO NOT USE ABRASIVE CLEANSERS AND PADS OF ANY TYPE ON A GLOSS FINISH: PLEASE CONTACT YOUR ASPIRO[®] RETAILER/DEALER FOR MORE INFORMATION.

Spray a non-abrasive product such as Mr. Muscle over stain and wait for a couple of minutes.
 Then, scrub in a small circular motion circular motion with a wet sponge.

Darker Color	Darker colors tend to require more attention than lighter colors. scrubbing too aggressively may actually reduce the gloss level. Do not use abrasive cleansers, pads or steel wool...
--------------	----------------------------------------------------------------------------------------------------------------------------------------------------------------------------------------------

After completing the above procedure, rinse with clear water and wipe dry a soft cloth or paper towels to prevent spotting. To enhance the visual color clarity and hide minor scuffs, apply Countertop Magic[®] cleanser (available at any hardware store or supermarket) and wipe away excess with a soft cloth.

4. Preventing Damage

Minor damage that may accidentally occur is most often repairable by a aspiro[®] certified fabricator/installer or repair expert. However, be sure follow these guidelines to prevent damage to your aspiro[®] surface.

- **HEAT** : aspiro[®] solid surfaces have excellent heat resistant properties compared to other countertop materials. However, placing hot pans, as well as some heat-generating appliances such as electric grills or deep-fryers, can damage the surface. Always use a hot pad or a trivet with rubber feet to protect aspiro[®]. Avoid subjecting aspiro[®] solid surfaces to extreme hot temperatures.
- **CHEMICAL** : Avoid exposing aspiro[®] solid surfaces to strong chemicals such as paint removers, acetone, and oven cleaners. Surfaces exposed to these chemicals should be promptly flushed with water; contact may cause spots that may require extensive repairs. Remove nail polish with a non-acetone-based nail polish remover and flush with water.
- **SCRATCHES** : Never cut or chop directly on a aspiro[®] solid surfaces, always use a cutting / chopping board.
- **FRACTURES** : Avoid standing on counter tops or dropping heavy objects on the surface.
- **NOTE** : Gloss reduction, scratching, and staining on solid surface incurred over time due to use is NOT a manufacturing defect but is considered normal wear and tear - The foregoing is NOT covered under the aspiro[®] Limited Warranty. However, the countertop can be re-sanded and refinished periodically if you so choose-you will be charged the standard hourly service rate. If your aspiro[®] product is accidentally nicked or deeply scratched, please contact your retailer/dealer or aspiro[®] certified fabricator/installer for advice about the most effective method of repair - most repairs are relatively quick and simple when performed by an experienced professional (service charge may apply).

For more detailed information, please contact your aspiro[®] dealer or visit us at www.durlax.com.

Use of certain names is intended only to show of a type off cleaning product. This does not constitute an endorsement or support for that product. Nor does the exclusion of any certain name product imply its insufficiency.

Technical Specifications

PHYSICAL PROPERTIES			
PROPERTY	TEST METHOD	UNIT	TYPICAL VALUES
DENSITY	ASTM D-792		1.74 - 1.75
BARCOL HARDNESS	ASTM D-2583		60
TENSILE STRENGTH	ASTM D638	MPA	37.56
TENSILE MODULUS	ASTM D638	MPA	10499
FLEXURAL STRENGTH	ASTM D790	MPA	55.5 - 67.1
FLEXURAL MODULUS	ASTM D790	MPA	8767 - 9200
THERMAL EXPANSION	ASTM D696	10(-5)IN/IN C	2.94
STAIN RESISTANCE	ANSI Z124		NO EFFECT
BOILING WATER SURFACE RESISTANCE	NEMA LD3		NO EFFECT
HIGH TEMPERATURE RESISTANCE	NEMA LD3		NO EFFECT
BALL DROP	NEMA LD3		NO VISIBLE DAMAGE
WATER ABSORPTION	ASTM D570		0.023%

PRODUCT SPECIFICATIONS						
SERIES	THICKNESS		WIDTH		LENGTH	
	mm	in	mm	in	mm	in
WHITE	6	1/4	760	30	2440	96
	12.0	1/2	760	30	2440	96
SOLID	6	1/4	760	30	2440	96
	12.0	1/2	760	30	2440	96
SAND	6	1/4	760	30	2440	96
	12.0	1/2	760	30	2440	96
MAGNA	6	1/4	760	30	2440	96
	12.0	1/2	760	30	2440	96
QUANTRO*	6	1/4	760	30	2440	96
	12.0	1/2	760	30	2440	96

* 6 mm thickness is available on request and physical properties might differ from the above mentioned.

Disclaimer

The information contained herein is provided by Durlax™ Archtech Pvt. Ltd. and its subsidiaries and affiliates (collectively referred to as "Durlax") for information purpose only and should be used by individuals with technical experience and knowledge in the area. Durlax does not make any representation or warranties of the usefulness or expected result of the information, and does not assume any responsibility whatsoever related to use of the information. Exclusion of the implied warranties may not apply in certain jurisdictions.

Colours of aspiro[®]



Seal of Trust
10 Years Limited Warranty

Whites



Arctic White AW 925

Solid



Natural NT-902



Hot DH-903



Sun DS-904



Mandarin DM-905



Black Coffee BC-906



Nocturne DN-907

Sand



Sand Cream SC-908



Aurora AR-909



Dusk AD-910



Azure AZ-911



Black Quartz BQ-912



Everest EV-914



Silvery Sand SS-934

Quantro



Perna White PW-926



Meteor ME-927



Shell SH-928



Monte Blanc MB-929



Spice SP-930



Elbaite EI-931



Sapphire SF-932



Black Forest BF-933



Perna Black PB-938

Magna



Savannah MV-916



Sahara MS-917



Cocoa Brown CC-918



Gemini GM-919



Antarctica MT-920



Mediterranean MD-933



Rain Forest RF-935



Pebble Shiffon PC-936



Forsty Petal FP-937

Printed representation of colours may vary from actual samples :
Please view actual sample prior to selection.