



FORMICA®
LAMINATE

1MM
CLASSIC +
SERIES




A **FletcherBuilding** company

ORIGINATE

with FORMICA CLASSIC+ SERIES

PREMIUM COLLECTION



*FORM, WHICH SHOULD
BE THE CLEAN-CUT
EXPRESSION OF
MECHANICAL EXCELLENCE,
HAS BECOME SENSUOUS
AND ORGANIC.*

*RAYMOND
LOEWY*

100
YEARS OF FORMICA

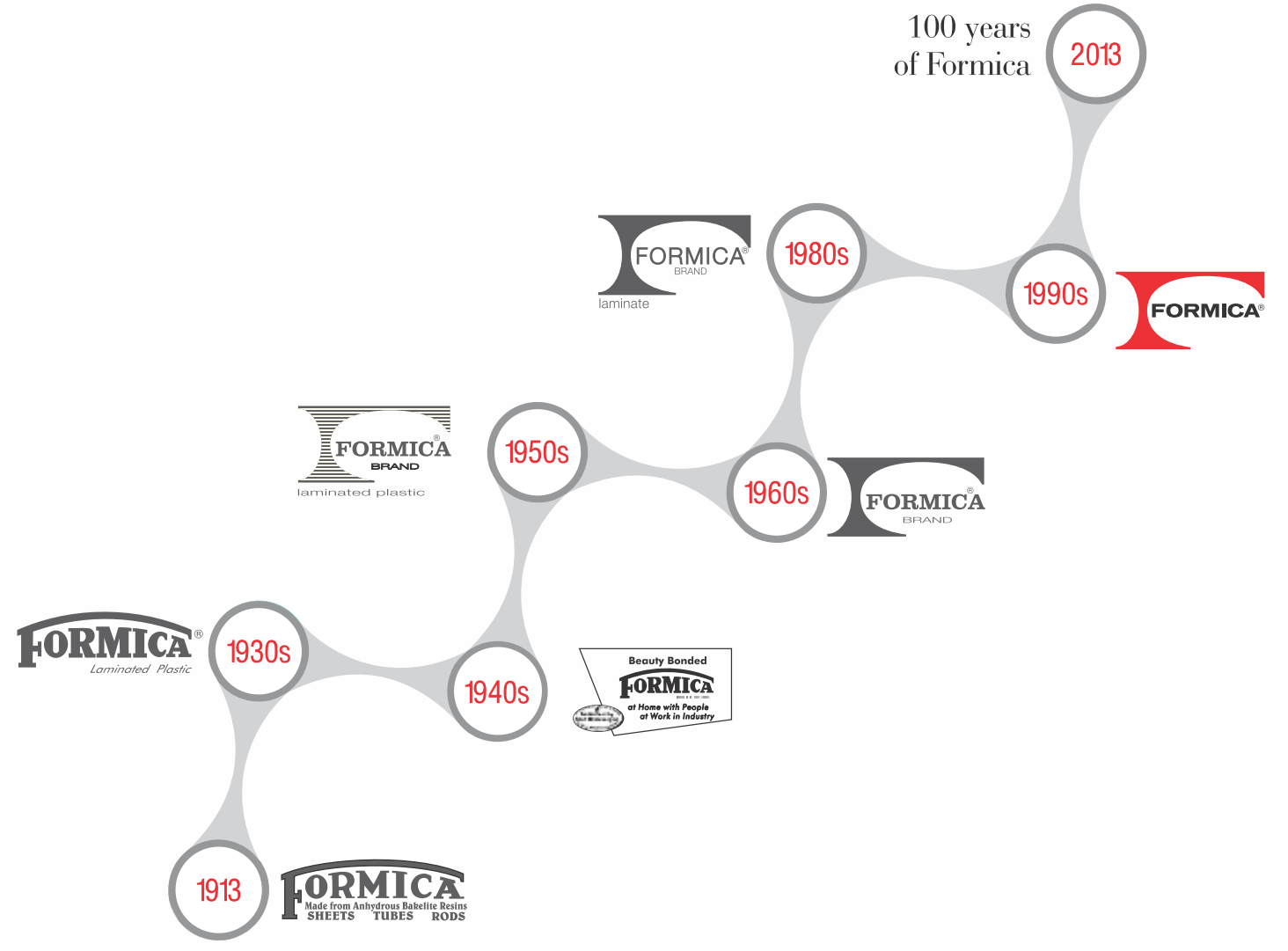


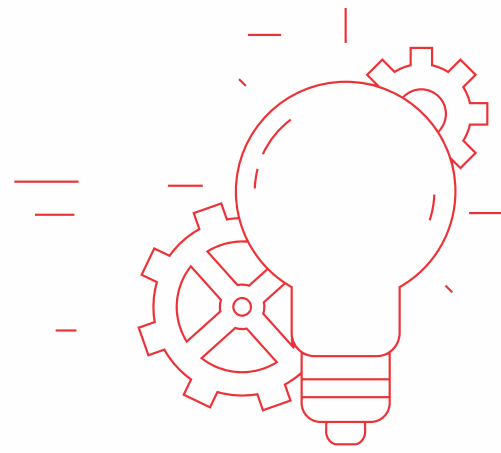
For 100 years, the story of the Formica® brand has been one of discovery and innovation. Formica is an iconic brand inextricably linked to the invention of the original High Pressure Laminate (HPL). Formica® brand celebrated 100 years in 2013.

Founded by Herbert A. Faber and Daniel J. O' Connor in the year 1913, Formica® has been a forerunner in laminates production worldwide. Before 1913, all laminates were made from the mineral mica but with roots in chemistry and engineering, Faber and Conor stumbled upon a crucial and more economical alternative and soon adopted this method of producing laminates that were strong, light, and excellent electrical insulators and since they became a very good substitute "for" the mineral "mica", the brand was conceptually named "Formica".

The heritage and brand reputation of the Formica Group of companies has been founded on quality, service and innovative product lines. Formica has developed an unrivaled expertise that ensures products meet the needs of their applications as well as market demands.

THE
ORIGINAL INVENTOR
OF LAMINATE





Formica is a part of Fletcher Building, a publicly traded one of the largest building materials and Construction Company based in Auckland, New Zealand.

Fletcher Building has five operating divisions: Building Products, International Businesses, Residential & Land Development, Distribution and Construction. Its values, beliefs and operating practices are shaped by a heritage of constructive, enduring relationships within Fletcher and with shareholders, customers, and communities.

Fletcher building is world's largest manufacturer of decorative surfaces and high pressure laminate for commercial and residential design with its businesses operating across several countries worldwide from Australasian home base to the South Pacific, Asia, North and South America, Europe and the Middle East.

Fletcher Building operates in more than 40 countries, manufacturing and distributing world-leading building and construction products



FORMICA INDIA

Original Inventor of Laminate, Formica has achieved a strong and steady presence in the Indian market over the years. Headquartered in Delhi, Formica India boasts of colossal and hi-tech manufacturing plant in Kalol, Ahmedabad. The plant meets global manufacturing excellence accompanied by a brilliant nationwide distribution system and a team of dedicated partners and work force.

Working closely with architects, designers and developers, the company is strategically positioned to offer new products and surfacing solutions that complement current design trends. The ongoing product design and development process underlines company's commitment to innovation.

Formica India offers a vast range of choices in terms of patterns, structures and colours can be listed under; Liners, Slender, Classic, Post Form Grades, Compact, Color Core and AR +. All these ranges are a creation of well thought artistic ideas, matching and practical decor suitabilities.

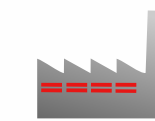
Formica has created a huge range of laminates for all interiors & exteriors without compromising on looks, performance and safety.



The 'Original Inventor' with 100 years of innovation and excellence.



Formica Group is a part of Fletcher Building Company.
www.fbu.com



State-of-the-art Laminate manufacturing unit at Kalol, Gujarat.

Our Products



Formica® Classic

THE ORIGINAL HIGH PRESSURE LAMINATE

Formica's iconic range of 1mm laminates is a mix of fashion and functionality that are of great importance to architects and the interior decorators. It is a unique invention in its own way.

Classic+ series textures inspired from natural elements come in Woods, Stone, Concrete and Suede Finishes therefore describe ORIGINATE.

These laminates are manufactured in state of the art facility making use of high-grade raw minerals taking into consideration Indian environmental specifications and following global standards.

Formica® Slender

WOODS, GLOSSY, TEXTURED AND SOLID RANGES IN 0.8MM

Formica® Slender Range is a series of slim laminates with a thickness of 0.8mm. These are available in a variety of range from woods to glossy to texture and solids, making it an exciting experience to do up any décor spaces. Despite their thinness, these laminates are a proof of durability and superior design.

Produced exclusively at Formica® India's factory at Kalol in Gujarat, the Slender Range is an ideal and budget-friendly option for a gamut of interior applications.

Formica ColorCore®

SOLID COLOR LAMINATES

Formica® ColorCore® with its solid colour throughout is ideal for applications in high traffic areas, innovative and stylish interiors such as countertops, cabinets, doors, work surfaces or anywhere you don't want to see the dark seam lines associated with traditional laminate edges.

This segment offers high-performance along with a consistent color coding throughout the surfaces. ColorCore® is available in selected solid colors in gloss and matte finish.

ColorCore® can be machined, routed or engraved to create striking design effects any way you cut it.

Formica® AR+®

HIGHLY RESISTANT TO SCUFF AND ABRASION

Formica® AR+® Range is a superior high gloss laminate for modern interiors and renovations. With greater abrasive and scuff resistance, surfaces will maintain their shine over standard gloss laminates, while a modern range of stunning decors will help you create beautiful colour schemes.

Formica® Post Forming

FOR ROUNDED SURFACES AND EDGES

Formica® Post Forming Range, a result of relentless innovation and technical prowess, is made exclusively for curved or rounded surfaces such as corners and edges of tables, benches, boards, etc. The technology that distinguishes this range is its ability to bend and be flexibly installed on rounded surfaces.

OUR NEW COLLECTION OFFERS AN EXCITING
NEW TAKE ON DESIGN. THE INTERNATIONALLY
IN VOGUE COLORS WITH COMPLEMENTING
TEXTURES WILL GIVE YOUR SPACE A
PERFECTLY PULLED TOGETHER LOOK FOR A
STYLE THAT TRULY STANDS APART.



FRESH
STYLE.
PERFECT
FINISH

I N D E X

Texture

Design Name	Page No.	Row	Col.
1146 Wildweald (RWD)	24	1	A
1147 Lightweald (RWD)	24	1	B
1148 Alternate Oak Gentle (OGN)	25	1	B
1149 Alternate Oak Rich (OGN)	25	1	A
1150 Timber Canvas Wood (RWD)	21	1	A
1151 Timber Canvas Dark (RWD)	21	2	A
1152 Timber Canvas Grey (RWD)	21	1	B
1153 Conform Oak (OAK)	28	2	B
1154 Parched Oak (OAK)	28	1	B
1155 Ebony Oak (OAK)	28	1	A
1156 Driftwood (WOD)	29	2	A
1157 Finewood (WOD)	29	2	B
1158 Raywood (WOD)	29	1	A
1159 Rainbow Woodland (DMT)	20	1	A
1160 Cloud Woodland (DMT)	20	1	B
1680 Snowcrust (DGL)	09	2	A
1680 Snowcrust (STN)	08	1	B
1681 Alabaster (DGL)	09	1	A
1681 Alabaster (STN)	08	1	A
1682 Brown Stile (RCT)	16	1	B
1683 Grey Stile (RCT)	16	1	A
1690 Milkyway (DGL)	13	1	A
1690 Milkyway (STN)	12	1	A
1691 Starcluster (DGL)	13	2	A
1691 Starcluster (STN)	12	1	B
1695 Aglow (DMT)	17	2	B
1696 Tan (DMT)	17	1	B
1697 Ashen (DMT)	17	1	A

Suede Finish

Design Name	Page No.	Row	Col.
1146 Wildweald (SF)	42	1	A
1147 Lightweald (SF)	42	2	A
1148 Alternate Oak Gentle (SF)	43	2	A
1149 Alternate Oak Rich (SF)	43	1	A
1150 Timber Canvas Wood (SF)	39	1	A
1151 Timber Canvas Dark (SF)	39	1	B
1152 Timber Canvas Grey (SF)	39	2	B
1153 Conform Oak (SF)	46	2	B
1154 Parched Oak (SF)	46	1	A
1155 Ebony Oak (SF)	46	1	B
1156 Driftwood (SF)	47	1	A
1157 Finewood (SF)	47	2	B
1158 Raywood (SF)	47	1	B
1159 Rainbow Woodland (SF)	38	1	A
1160 Cloud Woodland (SF)	38	2	A
1682 Brown Stile (SF)	34	1	A
1683 Grey Stile (SF)	34	1	B
1695 Aglow (SF)	35	2	B
1696 Tan (SF)	35	1	A
1697 Ashen (SF)	35	2	A

NOTE:

Full Sheet (4ft x 8ft) view designs are shown in this sample folder to give a clarity of the design on the entire sheet.

Application pictures used in this sample folder are purely suggestive in nature, showing the end use of the laminates, leaving the potential of laminate use to many more possibilities.

Colors of the Laminate designs used in these pictures may not match with the samples pasted due to the limitation of printing.

T E X T U R E S



Stone (STN)



Diamond Gloss (DGL)



Roughcut (RCT)



Drymatt (DMT)



Realwood (RWD)



Oakgrain (OGN)



Oak (OAK)



Wood (WOD)



Suede Finish (SF)



INSPIRED FROM NATURE

Experience the sense of touch; of beauty that is tangible. A category replete with abstract impressions, Textures invokes the soul through appealing designs embossed on laminates. Hold your breath to surround yourself with one of the most royal, majestic and extraordinary range of surfacing statements with Textures.

CRUST MARBLE
stone texture(STN)

Stones beneath our feet rumble to each other now all around the world, stones in my hands tell me that I am real; sitting in my hands stones keep silent company.

FULL SHEET VIEW



A



FI 1681 Alabaster (STN)

B



FI 1680 Snowcrust (STN)

A



1
FI 1681 Alabaster (DGL)



2
FI 1680 Snowcrust (DGL)



FULL SHEET VIEW



*The half yellow and the half green leaves
are trying to mimic beautiful color.*



A

B

1



FI 1690 Milkyway (STN)



FI 1691 Starcluster (STN)

CLUSTER MARBLE
diamond gloss texture(DGL)



A



1

FI 1690 Milkyway (DGL)



2

FI 1691 Starcluster (DGL)



STONE TILE
roughcut texture(RCT)

FULL SHEET VIEW



*They are yours, and be the measure of
their worth for you to treasure.*



A

B

1



FI 1683 Grey Stile (RCT)



FI 1682 Brown Stile (RCT)

A

B

1



FI 1697 Ashen (DMT)

2



FI 1696 Tan (DMT)



FI 1695 Aglow (DMT)

FULL SHEET VIEW



Clasp me in your warm embrace while the pale stars shine, storm clouds hover above you, your strength and undying beauty span the sky.

COLOR PLANK
drymatt texture(DMT)



FULL SHEET VIEW



*They have no mouth but seem to speak
a thousand words so mild and meek.*



A

B



FI 1159 Rainbow Woodland (DMT)



FI 1160 Cloud Woodland (DMT)

A

B

1



FI 1150 Timber Canvas Wood (RWD)

2



FI 1151 Timber Canvas Dark (RWD)



FI 1152 Timber Canvas Grey (RWD)

FULL SHEET VIEW



Early morning the earth is nothing, the sprawling mocha wood sleeps, the blond fescue still. Then, the golden prairie flames, the timber plain consumed.

FULL SHEET VIEW



*You love the colors - so do I.
I wish the sky would rain down rainbows, as they rain.*

A

B

1



FI 1146 Wildweald (RWD)



FI 1147 Lightweald (RWD)

ALTERNATE OAK
oakgrain texture(OGN)



A

B



FULL SHEET VIEW



*Colors a few and then you will know
how your life is fresh and new.*

FI 1149 Alternate Oak Rich (OGN)

FI 1148 Alternate Oak Gentle (OGN)

FULL SHEET VIEW



Love touches you tenderly through the winds, they spread the fragrances in your arms. It grows enamored of the presence, what a beautiful bond.



1

2

A



FI 1155 Ebony Oak (OAK)

B



FI 1154 Parched Oak (OAK)



FI 1153 Conform Oak (OAK)

WEATHERED
wood texture(WOD)



A

B

1



FI 1158 Raywood (WOD)

2



FI 1156 Driftwood (WOD)



FI 1157 Finewood (WOD)

FULL SHEET VIEW

*The unconditional acceptance is captivating, soft hearted beauty,
the passive life is exquisite treasure of endless emotions.*





SUEDE FINISH

SMOOTH

The softness of suede make it suitable for clothing and delicate uses, and here our talented team ensures that our highest quality suede finished laminates give full justice to the human sense of touch. With perfection in every inch of the sheets; beautifully all the way through designs adds instant visual sophistication, leaving an everlasting impression.

FULL SHEET VIEW



Joy is seeing sunshine's reflection in nature's colors.

A

B

1



FI 1682 Brown Stile (SF)



FI 1683 Grey Stile (SF)

A

B

1



FI 1696 Tan (SF)

2

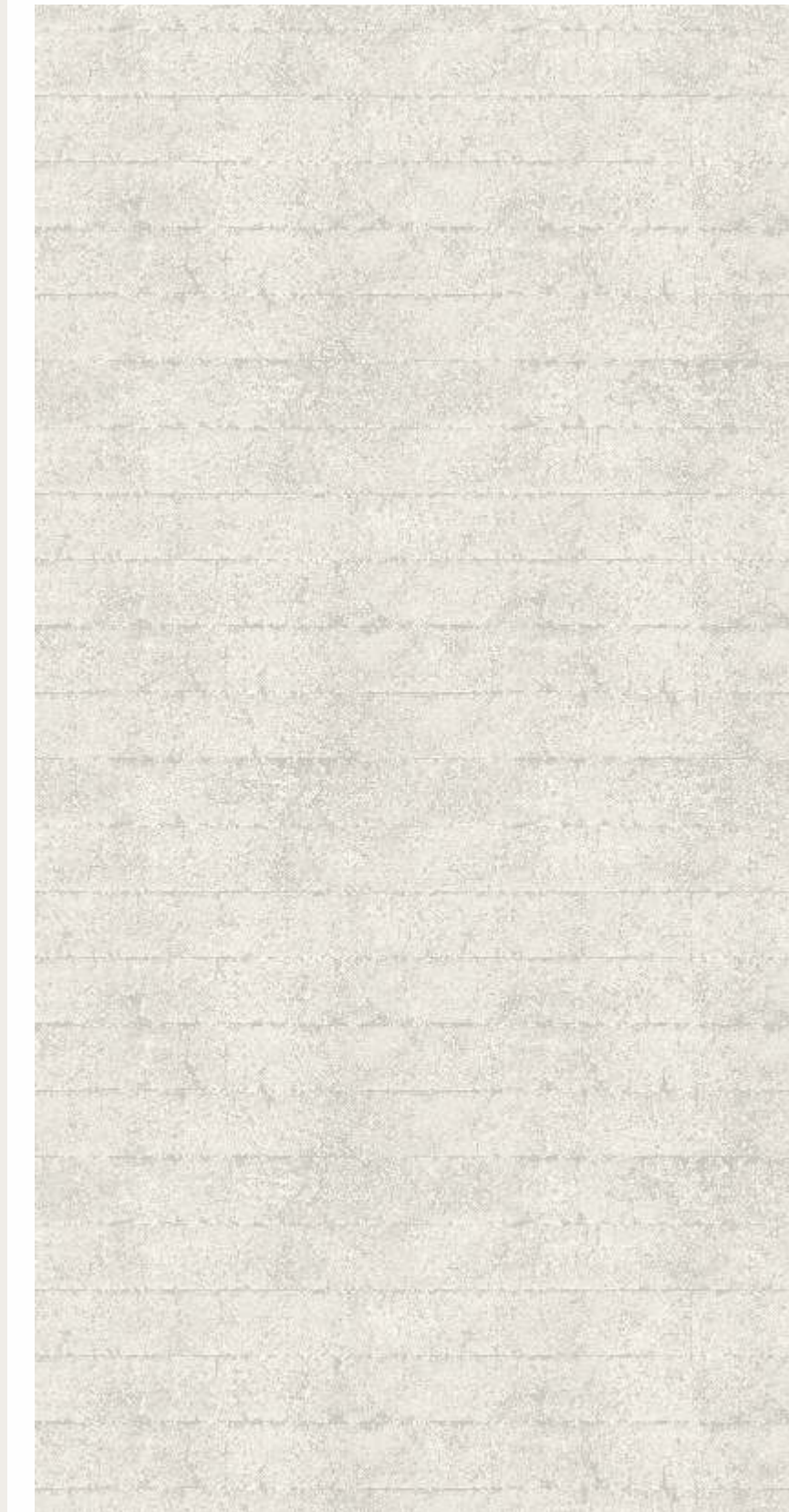


FI 1697 Ashen (SF)



FI 1695 Aglow (SF)

FULL SHEET VIEW



*The tiny wings of a rose, luminous at dusk and blazing at dawn,
gleaming in happiness like a star, illuminate your galaxy all the time.*





Silently the love blooms, in silence it falls away; yet here now, at this moment, at this place, the world of love, the whole of the world is blooming.

FULL SHEET VIEW



A

1



FI 1159 Rainbow Woodland (SF)

2



FI 1160 Cloud Woodland (SF)

A

B

1



FI 1150 Timber Canvas Wood (SF)

2



FI 1151 Timber Canvas Dark (SF)



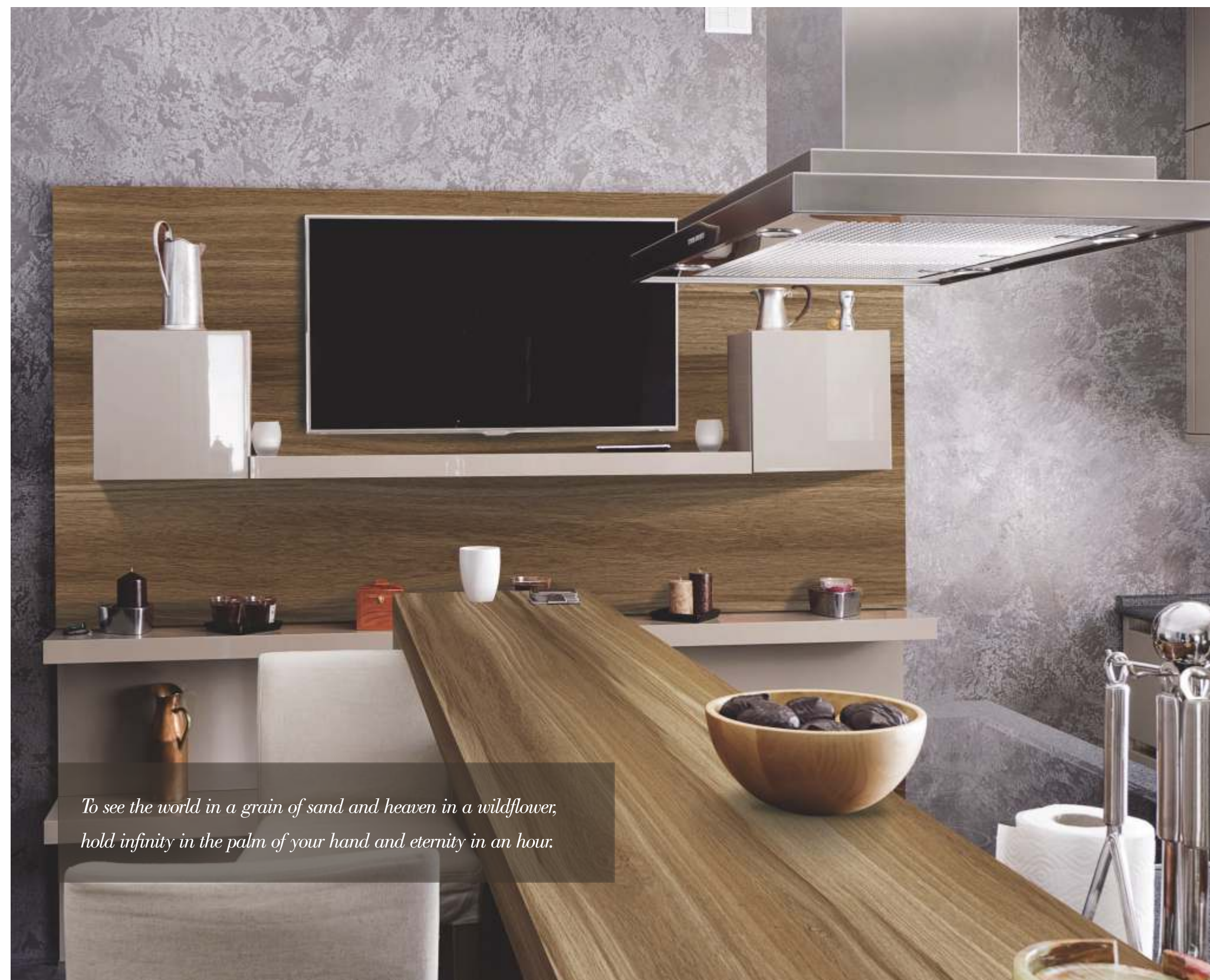
FI 1152 Timber Canvas Grey (SF)

FULL SHEET VIEW



Commotion of colors filters innate dross, with a heart in rare and soul in gloss.





*To see the world in a grain of sand and heaven in a wildflower,
hold infinity in the palm of your hand and eternity in an hour.*

FULL SHEET VIEW



A

1



FI 1146 Wildweald (SF)

2



FI 1147 Lightweald (SF)

A

1



FI 1149 Alternate Oak Rich (SF)

2



FI 1148 Alternate Oak Gentle (SF)

FULL SHEET VIEW



*The truth of the blossom, the truth of the mesmerising love.
The glory of eternal life is fully shining here.*

CLASSIC OAK
suede finish(SF)



FULL SHEET VIEW

A fresh soft love nods in the delicate breeze as the crickets hum.



A

B

1



FI 1155 Ebony Oak (SF)

2



FI 1153 Conform Oak (SF)

FI 1154 Parched Oak (SF)

A

B

1



FI 1158 Raywood (SF)

2



FI 1157 Finewood (SF)

FI 1156 Driftwood (SF)

FULL SHEET VIEW



*Beauty in color, beauty in nature. Love blooms
so succulent, hummingbirds flutter.*

PROTECTING THE SURFACE

SCRATCH AND IMPACT PROTECTION

Formica Brand Laminates and surfacing material are resistant to scratch and impacts under normal use conditions.

- Do not chop, slice, pound, or hammer on any laminate surface
- Knives or other sharp utensils may slice or scratch the surface
- Heavy blows from a hammer or metal tenderizer may crack or gouge the surface
- Cookware still hot should not be placed directly on laminate surfaces
- Avoid ironing or placing a hot iron on laminate surfaces
- Do not place lighted cigarettes directly on laminate surfaces

Ordinary Cleaning

In most cases, you only need to use a clean, damp, non-abrasive cotton cloth and a mild liquid detergent or household cleaner and rinse with clean water. Do not flood the laminate, since water can penetrate and cause the substrate to swell. Dry the surface with a soft, clean, non-abrasive cotton cloth.

Chemical Damage

Never use cleaners containing acid, alkali, or sodium hypochlorite. These cleaners will mar, etch, corrode, and permanently discolour the laminate surface. Also, make sure that bottles, rags, and other materials contaminated with these cleaners never come in contact with the laminate surface.



TECHNICAL DATA SHEET

FORMICA 1MM CLASSIC+ LAMINATES

Sr. No.	Property	Unit	Typical Values	Requirement as per IS 2046: 1995
1	Wear resistance	Revolutions (min)	450	350 (min)
2	Boiling water resistance	% Max. % Max. Grade (Appearance)	6.2 6.4 4	9.6 11.5 4
3	Dry heat resistance @ 180°C	Grade	5	4
4	Dimensional Stability at elevated temperature	% Max - ' L ' % Max - ' T '	0.19 0.74	0.55 1.05
5	Resistance to Impact by small diameter ball	N Min.	35	20
6	Cracking resistance	Grade	5	4
7	Scratch resistance	N Min	4 N	2 N Min.
8	Stain resistance	Reagents 1+2 Reagents 3+4	5 5	5 4
9	Light fastness - Resistance to colour change in Xenon Arc light	Grade Min	6	6
10	Cigarette resistance	Grade	4	3
11	Steam resistance	Grade	5	4

Note :

The samples shown in this folder are only indicative of the color, patterns and finishes available

Liability:

Whereas the product are manufactured to exacting standards, the nature of the application procedure is beyond our control. While we are pleased to offer advice, we cannot guarantee the finishing results or accept liability for it. All information is provided in good faith but without warranty expressed or implied. The liability of the company is limited to replacement of defective goods only. It is therefore necessary that prior to any commercial use you should conduct your own tests to evaluate efficacy of the product under the particular condition for its intended use.



A **FletcherBuilding** company



www.fbu.com

REGISTERED OFFICE & PLANT

Formica Laminates (INDIA) PVT. LTD.
591-592, 6Km Kalol-Vamaj Road, Village-Piyaj, Tal- Kalol, Dist- Gandhi Nagar, Gujarat-382721

HEAD OFFICE

Formica Laminates (INDIA) PVT. LTD., G4, B1 (EXT.) Mohan Co-Operative, Mathura Road, New Delhi-110044

BRANCHES

Chennai

Formica Laminates (INDIA) PVT. LTD.
New Door No. 173 (Old Door No.-109) Sydenhams Road, Chennai-60003

Kolkata

Formica Laminates (INDIA) PVT. LTD.
82 B, Elliot Road, Kolkata-700016

www.formica-india.com